

Hollingworth Primary School Knowledge Organiser

Topic: Animals, including humans

Year: 5

Strand: Biology

Famous Scientist

Human timelines

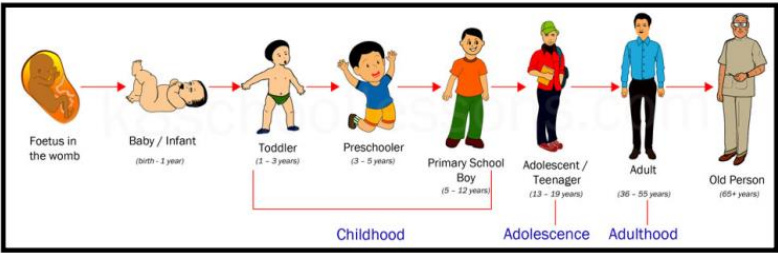
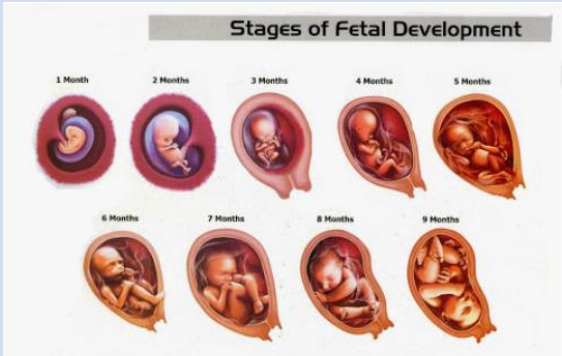
Vocabulary Dozen

Mary Seacole (1805-1881) was a British-Jamaican nurse and business woman who set up the ‘British Hotel’ behind the lines during the Crimean war. The British Hotel was the closest hospital to the battlefields. Mary was much loved by the soldiers who called her Mother Seacole.



After the war, Mary was very poor. A journalist, who had previously done so, wrote about Mary reminding people of her work during the war to raise money for her.

There was then a huge party for Mary with a message of congratulation from Queen Victoria.



What should I already know?

- Notice that animals, including humans, have offspring which grow into adults (Year 2)

Foetus (before birth – up to 40 weeks)  
Baby (0-1 years)  
Toddler (1-3 years)  
Child (3-10 years)  
Adolescent (10-18 years)  
Adult (18+ years)  
Old age (65+years)

adult	a human who is fully grown or developed
adolescent	a human in the process of developing from a <b>child</b> to an <b>adult</b>
aging	the process of growing old
child	a young human below the age of <b>puberty</b>
elderly	relating to humans in later life
foetus	the young of an animal in the <b>uterus (womb)</b>
gestation	to carry in the <b>uterus (womb)</b>
life cycle	the continuous sequence of changes from one form to the next
puberty	when a <b>child’s</b> body begins to develop and change as they become an <b>adult</b>
teenager	a human aged between 13 and 19 years
toddler	a young child who is just beginning to walk
uterus (womb)	an organ in the lower body of a female mammal

A baby doesn’t grow in a mother’s tummy or stomach, it grows in the uterus (womb).